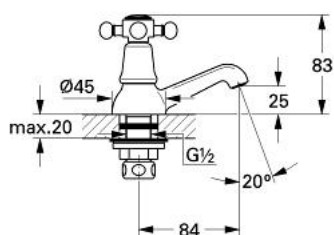


20 103 000 **PILLAR TAP 1/2"**

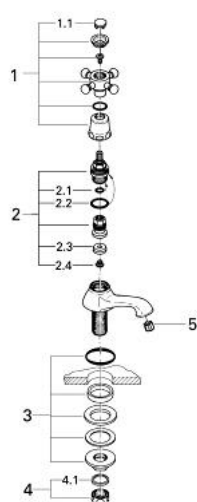


**PRODUCT DESCRIPTION**

- Colour: chrome
- cross handle
- marking: hot/cold
- laminar flow straightener
- with compression coupling 1/2"
- GROHE Long-Life finish



## 20 103 000 PILLAR TAP 1/2"



### SPARE PARTS, August 2007 – now

- 1: Cross handle (Spare part-nr. 45277000)
- 1.1: Marking piece, warm/cold (Spare part-nr. 45679000)
- 2: Headpart 1/2" (Spare part-nr. 07146000)
- 2.1: Sealing washer Ø 6 x Ø 2 (Spare part-nr. 0128300M)
- 2.2: O-ring Ø 18.2 x Ø 1.7 (Spare part-nr. 0392400M)
- 2.3: Seal (Spare part-nr. 0529100M)
- 2.4: Seal (Spare part-nr. 0529100M)
- 3: Shank fastening assembly 1/2" (Spare part-nr. 45000000)
- 4: Coupling nut 1/2" (Spare part-nr. 1290100M)
- 4.1: Fibre seal Ø 18,5 x Ø 12 x 2 (Spare part-nr. 0138900M)
- 5: Flow straightener (Spare part-nr. 0234500M)