

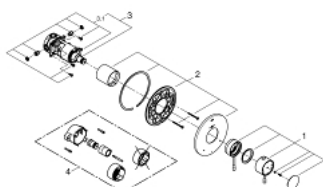
## 19 988 EN1 **GROHFLEX ESSENCE DUAL FUNCTION THERMOSTATIC TRIM WITH CONTROL MODULE**



### **PRODUCT DESCRIPTION**

- Colour: brushed nickel
- for shower/tubs with non-diverter tub spout or for 2 shower outlet applications
- GROHE TurboStat technology
- integrated volume control
- 2-way diverter function
- 1 axis operation
- for use with GrohFlex universal rough-In box 35 026 000 sold separately
- GROHE Long-Life finish

## 19 988 EN1 GROHFLEX ESSENCE DUAL FUNCTION THERMOSTATIC TRIM WITH CONTROL MODULE



### SPARE PARTS, July 2014 – now

- 1: Lever (Spare part-nr. 47988EN0)
- 2: escutcheon US (Spare part-nr. 47862EN0)
- 3: Control unit THM kit #2 (Spare part-nr. 47853000)
- 3.1: non-return valves (Spare part-nr. 47851000)
- 4: Extension (Spare part-nr. 47889000)\*

\* Optional accessories