

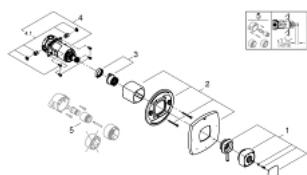
## 19 946 EN0 **GRANDERA DUAL FUNCTION PRESSURE BALANCE TRIM WITH CONTROL MODULE**



### **PRODUCT DESCRIPTION**

- Colour: brushed nickel
- GROHE Long-Life finish
- for 2 shower outlet application with shower head and hand shower
- integrated volume control
- 2-way diverter function
- 1 axis operation
- for use with GrohFlex universal rough-In box 35 026 000 sold separately
- metal trim plate

## 19 946 EN0 **GRANDERA DUAL FUNCTION PRESSURE BALANCE TRIM WITH CONTROL MODULE**



### **SPARE PARTS**, September 2012 – now

1: lever pressure balancing valve US (Spare part-nr. 47943EN0)

2: escutcheon US (Spare part-nr. 47946EN0)

3: handle adaptor US (Spare part-nr. 47863000)

4: Grohflex cartridge (Spare part-nr. 47860000)

4.1: non-return valves (Spare part-nr. 47851000)

5: Extension (Spare part-nr. 47890000)\*

\* Optional accessories