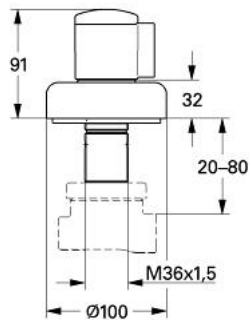


19 903 000 2-WAY DIVERTER

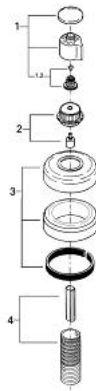


PRODUCT DESCRIPTION

- Colour: chrome
- for use with diverter rough-in valve
- 29 712 000
- without concealed body
- escutcheon with wall sealing
- screwable
- installation depth infinitely adjustable
- 20-80 mm
- with handle
- GROHE Long-Life finish



19 903 000 **2-WAY DIVERTER**



SPARE PARTS, January 1994 – now

- 1: Diverter handle (Spare part-nr. 45649000)
- 1.1: Cover cap (Spare part-nr. 04180000)
- 1.2: Replacement handle connection kit (Spare part-nr. 45186000)
 - 1.2.1: O-ring Ø 18.2 x Ø 1.7 (Spare part-nr. 0392400M)
- 2: Handle body (Spare part-nr. 45438000)
- 3: Escutcheon (Spare part-nr. 45433000)
- 4: Extension (Spare part-nr. 45439000)