

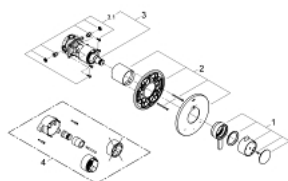
19 878 EN0 EUROPLUS DUAL FUNCTION THERMOSTATIC TRIM WITH CONTROL MODULE



PRODUCT DESCRIPTION

- Colour: brushed nickel
- for shower/tubs with non-diverter tub spout or for 2 shower outlet applications
- GROHE TurboStat technology
- integrated volume control
- 2-way diverter function
- 1 axis operation
- for use with GrohFlex universal rough-In box 35 026 000 sold separately
- flow rate:
- code compliance:
- GROHE SilkMove
- - ASME/ANSI A112.18.1M
- - CSA Standard B125.1-05
- GROHE Long-Life finish

19 878 EN0 EUROPLUS DUAL FUNCTION THERMOSTATIC TRIM WITH CONTROL MODULE



SPARE PARTS, September 2010 – now

- 1: lever US (Spare part-nr. 47871EN0)
- 2: escutcheon US (Spare part-nr. 47870EN0)
- 3: Control unit THM kit #2 (Spare part-nr. 47853000)
- 3.1: non-return valves (Spare part-nr. 47851000)
- 4: Extension (Spare part-nr. 47822000)*
- * Optional accessories