

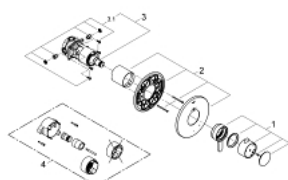
19 869 EN0 EUROPLUS SINGLE FUNCTION THERMOSTATIC TRIM WITH CONTROL MODULE



PRODUCT DESCRIPTION

- Colour: brushed nickel
- for shower only or shower/tub with diverter applications
- GROHE TurboStat technology
- integrated volume control
- integrated bypass option when used with diverter tub spout
- 1 axis operation
- for use with GrohFlex universal rough-In box 35 026 000 sold separately
- code compliance:
 - - ASME/ANSI A112.18.1M
 - - CSA Standard B125.1-05

19 869 EN0 EUROPLUS SINGLE FUNCTION THERMOSTATIC TRIM WITH CONTROL MODULE



SPARE PARTS, September 2010 – now

- 1: lever US (Spare part-nr. 47871EN0)
- 2: escutcheon US (Spare part-nr. 47872EN0)
- 3: Grohflex cartridge (Spare part-nr. 47850000)
- 3.1: non-return valves (Spare part-nr. 47851000)
- 4: Extension (Spare part-nr. 47822000)*

* Optional accessories