

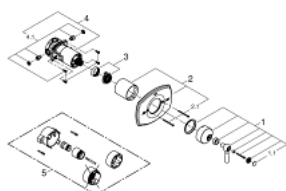
19 843 EN0 GROHTHERM 2000 AUTHENTIC SINGLE FUNCTION PRESSURE BALANCE TRIM WITH CONTROL MODULE



PRODUCT DESCRIPTION

- Colour: brushed nickel
- for shower only or shower/tub with diverter applications
- integrated bypass option when used with diverter tub spout
- for use with GrohFlex universal rough-In box 35 026 000 sold separately
- flow rate:
- code compliance:
- GROHE SilkMove
- GROHE Long-Life finish
- - ASME/ANSI A112.18.1M
- - CSA Standard B125.1-05
- ADA compliant
- GrohFlex Authentic

19 843 EN0 GROHTHERM 2000 AUTHENTIC SINGLE FUNCTION PRESSURE BALANCE TRIM WITH CONTROL MODULE



SPARE PARTS, March 2018 – now

1: lever pressure balancing valve US (Spare part-nr. 47858EN0)

1.1: Marking piece (Spare part-nr. 45763L00)

2: escutcheon US (Spare part-nr. 47856EN0)

2.1: screws US (Spare part-nr. 47849ENM)

3: handle adaptor US (Spare part-nr. 47863000)

4: Grohflex cartridge (Spare part-nr. 47857000)

4.1: non-return valves (Spare part-nr. 47851000)

5: Extension (Spare part-nr. 47890000)*

* Optional accessories