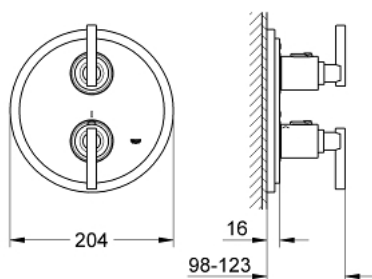


## 19 399 000 **ATRIO THERMOSTAT WITH INTEGRATED 2-WAY DIVERTER FOR BATH OR SHOWER WITH MORE THAN ONE OUTLET**

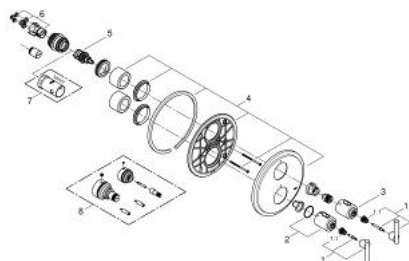


### PRODUCT DESCRIPTION

- Colour: chrome
- set for final installation for
- GROHE Rapido T 35 500 000
- without concealed body
- GROHE Long-Life finish
- GROHE SafeStop safety button at 38°C
- Aquadimmer with multiple function
- diverter for 2 outlets
- diverter: bath/shower
- shut off and flow control
- escutcheon and shaft sealing
- wall escutcheon
- covered fixing
- with Jota handle



## 19 399 000 ATRIO THERMOSTAT WITH INTEGRATED 2-WAY DIVERTER FOR BATH OR SHOWER WITH MORE THAN ONE OUTLET



### SPARE PARTS, April 2014 – now

- 1: Handle Jota (Spare part-nr. 47324000)
- 1.1: Snap insert (Spare part-nr. 08943000)
- 2: Temperature scale handle (Spare part-nr. 06676000)
- 3: Handle for shut-off valve (Spare part-nr. 06654000)
- 4: Escutcheon (Spare part-nr. 47326000)
- 5: Aquadimmer (Spare part-nr. 47364000)
- 6: Adapter (Spare part-nr. 12701000)
- 7: Socket spanner (Spare part-nr. 19332000)\*
- 8: Extension set 27.5 mm (Spare part-nr. 47781000)\*

\* Optional accessories