

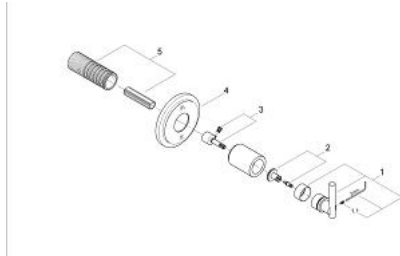
19 166 000 **ATRIO 2-WAY DIVERTER**



PRODUCT DESCRIPTION

- Colour: chrome
- with Jota handle
- set for final installation (for 29 712)
- without concealed body
- escutcheon with wall sealing
- screwable
- installation depth infinitely adjustable
- 20-80 mm
- GROHE Long-Life finish
- GROHE SilkMove
- Atrio lever handle
- 2 inlets
- 3 outlets 1/2"

19 166 000 **ATRIO 2-WAY DIVERTER**



SPARE PARTS, January 2002 – now

- 1: Handle Jota (Spare part-nr. 18034000)
- 1.1: Thread pin (Spare part-nr. 1123200M)
- 2: Replacement handle connection kit (Spare part-nr. 45605000)
- 3: Extension for spindle (Spare part-nr. 45611000)
- 4: Escutcheon (Spare part-nr. 45908000)
- 5: Extension (Spare part-nr. 45439000)