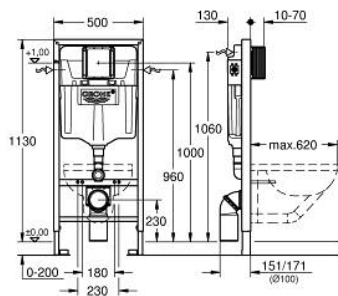


## 10 912 899 90 **SOLIDO ELEMENT FOR WC, 1.13 M INSTALLATION HEIGHT**



### PRODUCT DESCRIPTION

- with flushing cistern GD 2, 4.5 - 6 l
- for on-the-wall installations or studded walls
- powder coated steel frame, self-supporting
- for dry-cladding, completely pre-assembled
- with fixed connections
- quick adjustment, lockable
- fixing material
- TÜV approved
- 2 WC fixing bolts
- fixing device for ceramic
- WC ceramics with small bearing area (less than 205 mm) require additional accessory 38 779 000
- distance of fixing bolts 180/230 mm
- 90° rotatable PVC outlet bend 100 mm
- depth adjustable
- inlet and outlet connecting set
- flushing cistern GD 2, 4.5 - 6 l, containing following features:
  - adjustment ex factory 3 l and 4.5 l
  - pneumatic discharge valve offering 3 modes of operation: dual flush or start/stop or single flush
  - water supply from left/right or back
  - low noise (group I acc. to German Noise Specification)
  - insulated against condensation
  - ½" water supply connection including integrated angle valve and push fit flexible hose union
- no tools required for the installation of the inspection shaft including protection during construction phase
- for vertical or horizontal use
- including wall brackets 38 558 00M for on-the-wall installation
- for mounting of small flush plates please order revision shaft 40 911 000 (sold separately)
- for easy flow regulation via inspection shaft without removing the valves please order flow manager 42 593 000 (sold separately)